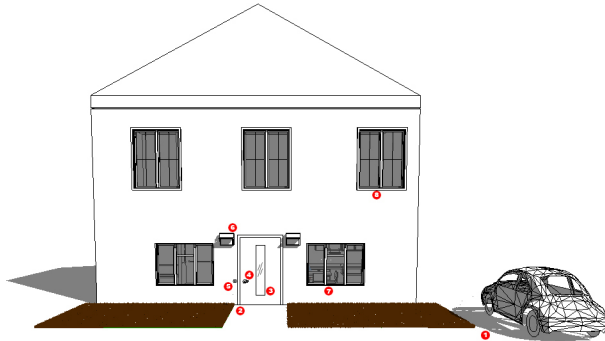


ENTRANCE



Formed in St. John's NL 2004, the Universal Design Network NL (UDNNL) is a team of individuals from across many disciplines which focus on inclusion and accessibility. Our mission is to work with and educate Government, Municipalities, and Builders on the benefits of Universal Design.



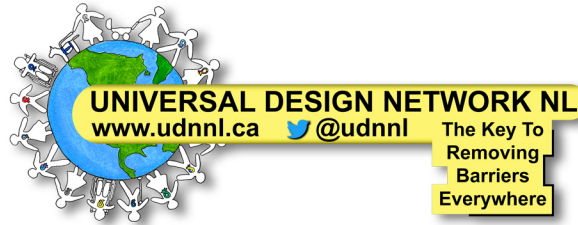
For more information on how Universal Design can work for you, Please visit www.udnnl.ca or scan here.



ST. JOHN'S



ABBY WILANSKY



Seven Principles Of Universal Design

Principle 1: **Equitable Use**

The design is useful and marketable to people with diverse abilities.

Principle 2: **Flexibility in Use**

The design accommodates a wide range of individual preferences and abilities.

Principle 3: **Simple and Intuitive Use**

Use of the design is easy to understand, regardless of the user's experience, knowledge, language skills, or current concentration level.

Principle 4: **Perceptible Information**

The design communicates necessary information effectively to the user, regardless of ambient conditions or the user's sensory abilities.

Principle 5: **Tolerance for Error**

The design minimizes hazards and the adverse consequences of accidental or unintended actions.

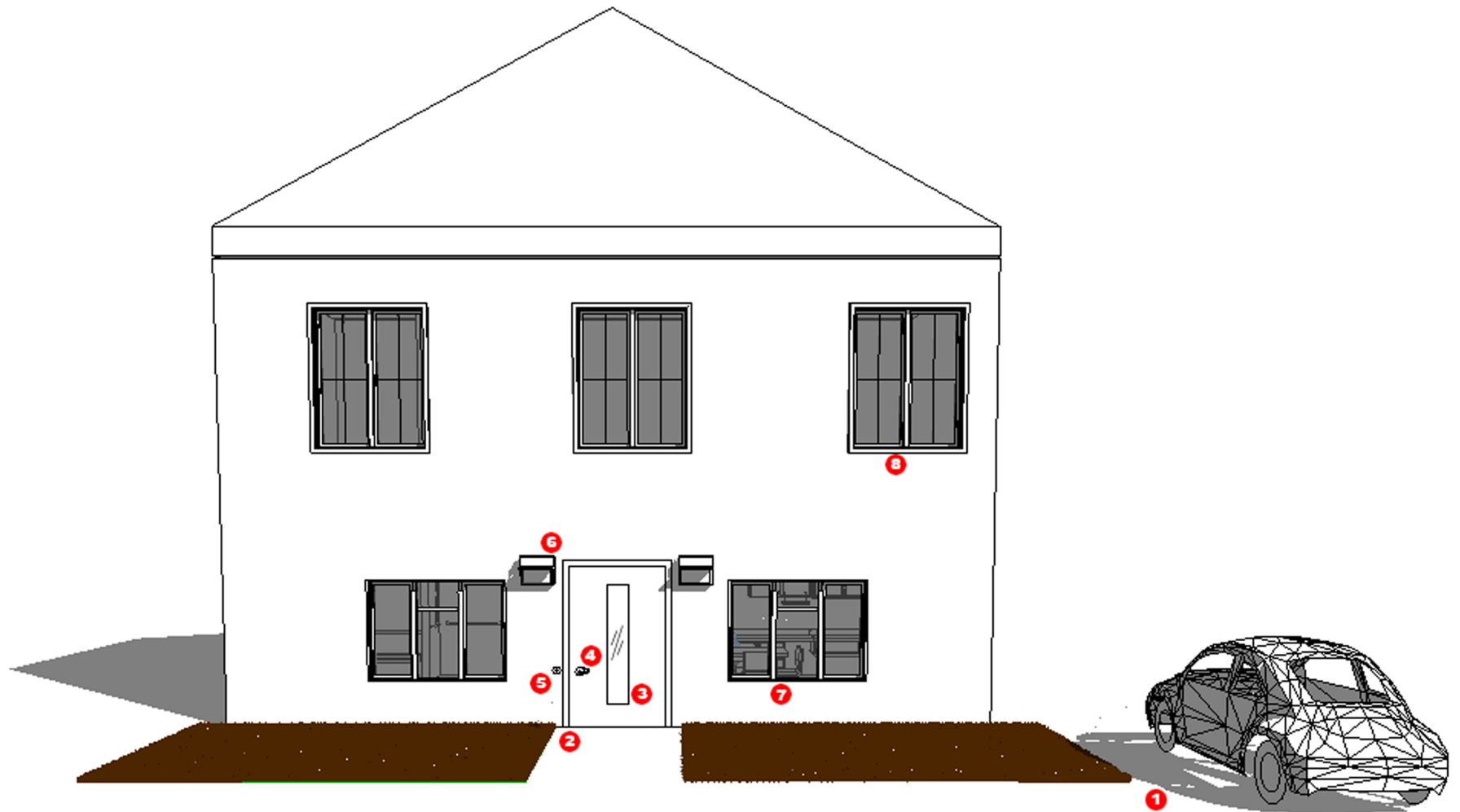
Principle 6: **Low Physical Effort**

The design can be used efficiently and comfortably and with a minimum of fatigue.

Principle 7: **Size and Space for Approach and Use**

Appropriate size and space is provided for approach, reach, manipulation, and use regardless of user's body size, posture, or mobility.

- 1 Flat transition from driveway to home.
- 2 Ground floor entry to home with a wider accessible doorway.
- 3 Side or center full length door windows provide viewable access to everyone.
- 4 Lever handles should always be used, they provide easy access.
- 5 Doorbells are lowered by 150mm to consider arm range of motion.
- 6 Adequate lighting ensures pathways are properly lighted.
- 7 Windows on the main floor are low enough to be usable from a seated position.
- 8 Windows on the second floor are low enough to be usable from a seated position



"Good design is obvious. Great design is Transparent."
Joe Sparano